



CARDS

COMSEC, ACCOUNTING, REPORTING AND DISTRIBUTION SYSTEM

Features

CARDS is a web-based application that provides full life-cycle support for an organization's COMSEC assets and automates all management-related tasks within an organization. CARDS supports the "business" of COMSEC. From key managers sitting at the COR to COMSEC custodians and all entities in between, CARDS has functionality for everyone in the COMSEC umbrella. Based on a central database, CARDS allows each user access to the information they need (and only the information they need) in real-time, simplifying and automating the task of running a COMSEC organization. CARDS saves an organization time and money, as well as minimizing potentially costly mistakes.

COMSEC Accounting

From receipt of material to issuing SF153s, CARDS handles all types of transactions with modern, easy-to-use interfaces. Material is tracked real-time in a central database giving users and policy makers a birds-eye view of all of the assets of an organization. As COMSEC material is transferred, received, and destroyed,

CARDS uses a high-integrity data model to ensure accuracy and records extensive digitally signed audit trails. Automatic destruction and inventories allows a user to destroy all superseded keys or perform mass inventories of multiple accounts at a time, increasing efficiency and speed.

Key Management

Complete key management tools enable key managers and controlling authorities to manage the full cycle of traditional and modern key using easily manageable graphic interfaces. CARDS provides Controlling Authorities system-wide control of key effective dates and supercession dates. Controlling Authorities may also set the key distribution requirements for each of its accounts, allowing automatic tracking of key expiration dates and ensuring automatic distribution of required key before expiration of current key to each account.

Black Key Distribution

CARDS improves the current cumbersome black key delivery

methods by facilitating worldwide, fully-secure black key delivery. CARDS Black Key Distribution module imports wrapped key from EKMS and distributes it through the network to CARDS users. It enables secure delivery to anyone, anywhere, including standard LAN/WAN, satellite, IP radio, and dial-up.

Configuration Management

COMSEC equipment continues to get more complicated with each generation; each make and model has its own set of data requirements. To easily adapt to these changes, CARDS offers extensive configuration management tools for all types of CCI equipment, including: multiple software versions, battery installation dates, key splits, custom field creation, search and report on all configuration management data, software update upload/downloads, accessory tracking and kits.

CARDS tracks millions of COMSEC assets worldwide.

Procurement

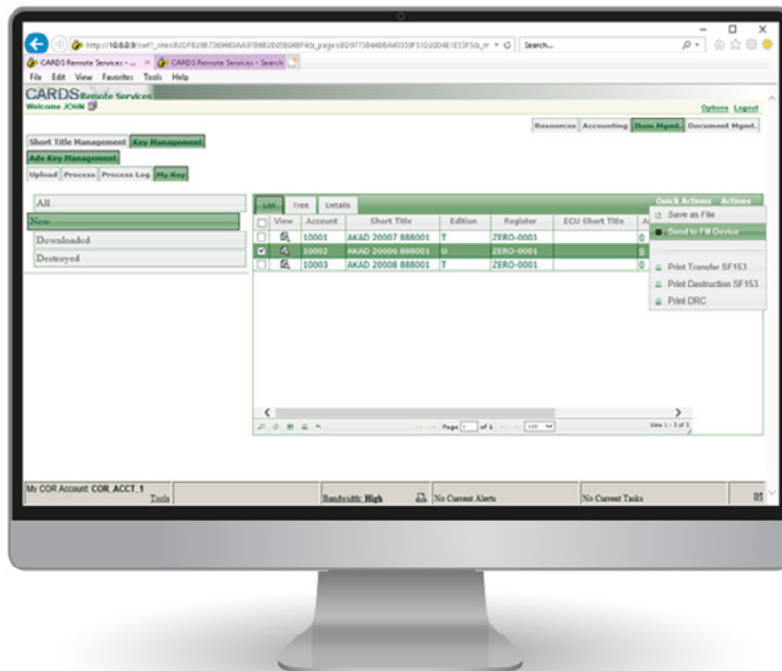
CARDS provides a procurement module to track procurement orders, funding sources, programs and allocation of COMSEC material based on previously defined procurement requirements. This allows personnel involved with procurement and asset allocation to move away from spreadsheets and hand-written notes to a centralized module which provides real-time balance information for COMSEC equipment. Personnel may easily view

the equipment balances for each program or department, transfer balances as desired and create depreciation reports. CARDS easily tracks the “who, when, where and how much” aspects of all COMSEC equipment procured.

Distribution

The CARDS distribution module offers a digital format which is able to track the creation and shipment of COMSEC packages. It is very

flexible in all its processes, allowing user or administrator customization. An administrator may easily set up limitless shipping types, label types and local element addresses, saving them in one location for easy access and modification. The CARDS distribution module supports multiple wraps with different labels for each wrap; as well as support for tamper protection programs.



Real-time COMSEC Life-Cycle Support

Ultra reserves the right to vary these specifications without notice.

© 2021 Ultra Electronics Ltd. All rights reserved.
1042.1-I&C-en-REV0821

ULTRA | Intelligence & Communications

✚ sales@ultra-us-gbs.com | www.ultra.group